

S36

Micro Diaphragm Liquid Pump



Datasheet



Highlights

- Can be used to transmit gases and liquids
- Driven by high-end BLDC motor
- Dry running, maintenance free
- Long service life under max load
- Industrial-grade reliability
- Multiple self-protection
- Compact size
- Self-priming

Applications

- Printing
- Laboratory
- Medical equipment
- Analytical instruments

10K hours
lifetime test



PERFORMANCE DATA

| Model | Voltage (V DC) | As Gas Pump | | | As Liquid Pump | | |
|--------------------------|--|------------------------|--------------------------------|--------------------|------------------------|------------------------|--|
| | | Max. Load Current (mA) | Max. Average Flow rate (L/min) | Max. Vacuum (-kPa) | Max. Load Current (mA) | Free Flow Rate (L/min) | |
| Material Option A | Diaphragm:EPDM Valves:EPDM Pump Head: Fiber reinforced PA6 | | | | | | |
| S36L | 24 | ≤550 | ≥2.2 | ≥23 | ≤650 | ≥3.0 | |
| S36M | 24 | ≤500 | ≥1.6 | ≥15 | ≤550 | ≥2.0 | |
| S36S | 24 | ≤450 | ≥1.0 | ≥9 | ≤500 | ≥1.3 | |
| | Note: The input voltage requires 24V±10% | | | | | | |
| Material Option B | Diaphragm:FKM Valves:FKM Pump Head: Fiber reinforced PA6 | | | | | | |

PERFORMANCE DATA

| Model | Max. Suction Height (mWg) | Flow Rate@ Max. Suction Height | Max. Pressure Heigh (mWg) | Flow Rate@ Max. Pressure Heigh |
|-------|---------------------------|--------------------------------|---------------------------|--------------------------------|
| S36L | 3m | 2.0L/min | 11m | 0.8L/min |
| S36M | 2m | 1.5L/min | 9m | 0.8L/min |
| S36S | 1.7m | 0.8L/min | 7m | 0.5L/min |

CONFIGURATION OPTIONS

Material Options

| | | | |
|-----------|----------------------|-----|--|
| Pump Head | Fiber reinforced PA6 | | |
| Diaphragm | EPDM | FKM | |
| Valves | EPDM | FKM | |
| Motor | BLDC | | |

Connector Options

Default PA hose connector/PP hose connector/Stainless steel hose connector
PC6 push-in quick connector/PC8 push-in quick connector /Rc1/8 inside thread

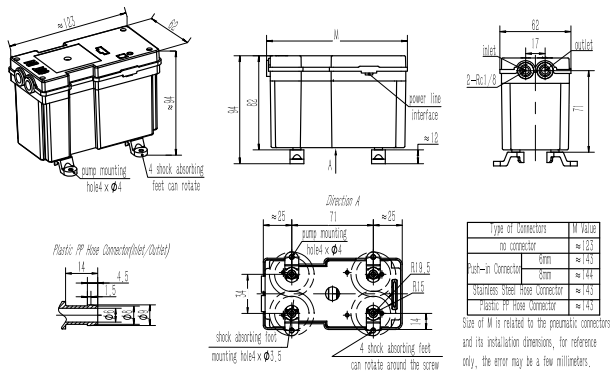
Function Options

Basic type Knob speed control Frequency speed control Top configuration

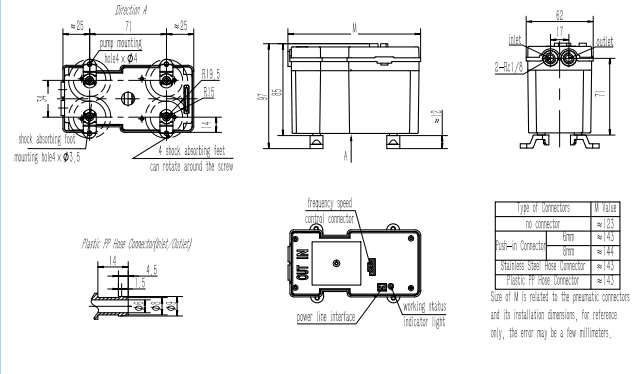
RELIABILITY DATA

| Models Versions | S36S S36M S36L | | |
|-----------------------------|--|----------|---------|
| | Simplified | Standard | Premium |
| Fully Loaded Lifetime (hrs) | 2500 | 6000 | 10000 |
| Unloaded Lifetime (hrs) | 8000 | 12000 | 18000 |
| Motor Lifetime (hrs) | 10000 | 15000 | 20000 |
| Test conditions | In a clean and non-corrosive laboratory, the pump is fully loaded (continuous pumping water) or unloaded (the inlet and outlet are directly connected to the atmosphere), and runs continuously around the clock; ambient temperature: 5°C~33 °C, relative humidity: 50%-85%, fluctuates with the climate. | | |
| Working Condition | | | |
| Operating temperature | Permissible ambient temperature is 0°C~50°C, it is not suitable to be exposed to the sun, and it should work in a clean and ventilated environmen | | |
| Medium | Permissible temperature of the liquid medium is 5°C~50°C and gaseous media is 0°C~50°C , the transferring gas cannot contain solid particles or oil mist. It is not allowed to pump oily liquid and high viscosity liquid. | | |
| Wetted materials | EPDM, fiber reinforced nylon, tolerance to alcohol, acid, alkali, etc. (except strong acid, concentrated acid, lipids, benzene, gasoline, etc.) | | |

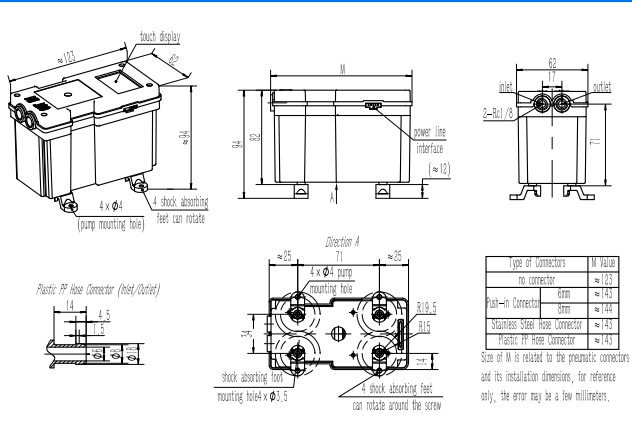
S36 BASIC TYPE DIMENSIONS



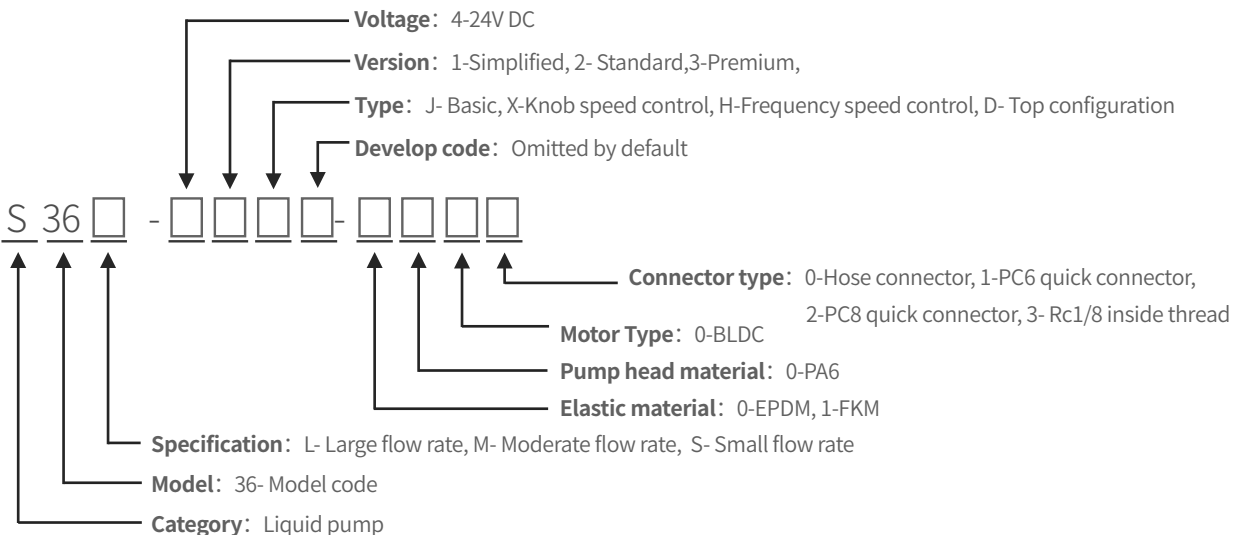
S36 KNOB/FREQUENCY SPEED CONTROL TYPE



S36 TOP CONFIGURATION TYPE DIMENSIONS



S36 MODEL KEY



| ACCESSORIES | | |
|-------------------------------|--|--|
| Descriptions | Illustration | Function |
| Shock-isolation mounting feet |  | Reduce the impact of vibration on the equipment during the operation of the pump. This accessory comes with the pump*4 |
| Filter |  | The 80-mesh filter protect both pumps and other upstream instrumentation and hydraulic circuits against particulate, crystals and fibers . It is recommended to replace it regularly. This accessory comes with the pump*1 |
| Check valve |  | Enhance the cut-off capability of the gas circuit system to ensure one-way gas flow. This accessory can be purchased on demand |
| Flow stabilizer |  | Eliminate and reduce pulsation, make gas output smooth and stable, this accessory can be purchased on demand |
| Manual control valve |  | It can be used to manually adjust the gas flow rate, pressure and vacuum. This accessory can be purchased on demand |
| DC power adapter |  | 220V AC to DC switching power supply, this accessory can be purchased on demand |
| Silencer |  | It is used to eliminate and reduce the airflow noise caused by pumping operation, this accessory can be purchased on demand |



To be a driving force in innovation of human fluid technology

Create value for customers by offering high quality fluid solutions

This document is for reference only and does not constitute any promise or guarantee. The parameters and experimental data indicated in this document come from Hilintec life and aging laboratory and supplier laboratories. In the actual user system, due to differences in actual usage conditions and experimental conditions, relevant value will change accordingly. Due to product improvement needs, the parameters may be adjusted without notice. Please contact the manufacturer or agent for confirmation before purchasing. The trademarks, pictures, and logos in this document are owned by Chengdu Hailin Technology Co., Ltd. or a third party with legal rights.



www.mini-pump.com